



**Dovea** GENETICS

# COLOURED

DIRECTORY  
2024



# CONTENTS

Bull Code	Bull Name	Page Number	Bull Code	Bull Name	Page Number	Bull Code	Bull Name	Page Number
<b>Norwegian Red</b>			<b>Montbeliarde Continued</b>			<b>MRI/ Rotbunt</b>		
NR9837	NR Gard P ♀	1	MO8847	Pompilop ♀	22	De Vinkenhof Relano		28
NR5881	Roen ♀	2	MO7788	Punto ♀	23	MY7527	Berio DN	28
NR4941	Krovoll ♀	3	MO9163	Monduciel	24	MY7524	Regus DN	29
NR8826	NR Nerby-P ♀	4	MO6505	Otolib	24	MY7552	Olpe DN	29
NR8829	Sausvatn-PP ♀	5	<b>Ayrshire</b>			<b>Cross Bred</b>		
S4184	NR Lie ♀	6	AY7053	Visserdale Surano-ET ♀	25	Castlerock Saint John SRM		30
NR8832	NR Skoien ♀	7	<b>Dairy Shorthorn</b>			FRX131	Renny Oakwood ♀	31
NR6766	Maurstad-PP	8	MSX116	Kundes Golden Badg Fantasy	25	<b>Jersey</b>		
NR4944	Hustad	9	MSX221	Ballytrain Braveheart ♀	26	JE4764	Nextgen Hitman ♀	31
NR8097	Bollingmo	9	<b>Brown Swiss</b>			Nextgen Banniff ♀		32
<b>Fleckvieh</b>			BS7563	Superbrown Sheldon	27			
SI7911	Hokuspokus ♀	10	BS7569	Superbrown Harvest	27			
SI9061	Vlaturu	11						
	Sunshine ♀	12						
SI6580	Irregut PS	13						
SI5791	Sisyphus	14						
SI7893	Vollgenial	15						
SI6577	Womba	15						
SI7707	Valentino ♀	16						
<b>Montbeliarde</b>								
	Supreme JB ♀	17						
	Tacotac JB ♀	18						
	Nitchi JB ♀	19						
MO5638	Neutrino ♀	20						
MO8844	Pavel	21						

♀ Sexed Semen Available



## Other Catalogues Available

**Dairy Beef  
Directory 2024**



**Dairy  
Directory 2024**



## Symbols Legend

	<b>Sire Available as Sexed Semen</b>		<b>Transmits both positive chest and rump width or 5 in aAa code</b>
	<b>Available as Ultraplus Sexed Semen</b>		<b>Maintenance figure above €16 which will transmit lower live weights</b>
	<b>Suitable for heifers -Under 5.5% Calving Difficulty with more than 90% reliability or proven easy calving in country of origin</b>		<b>A Sire who is at least 5 days shorter than average with over 90% reliability</b>
	<b>Combined Solids of 0.50% For Irish bulls and +0.20% For International bulls</b>		<b>Faster than average milking speed with positive udders</b>
	<b>Genomic Sires with over €150 Fertility Proven Sires with over €100 Fertility International Sires with over €80 Fertility</b>		<b>Overall Udder Score above 2</b>
	<b>Above €16 Health Sub Index</b>		<b>Overall Conformation Score above 1 for Irish Sires and 1.5 for international Sires</b>
	<b>Carries the red gene for coat colour</b>		<b>Above 170Kg Milk, Above 40Kg Pure Friesian</b>
			<b>Ranked in the 90th Percentile for TB Resistance (Below 6%)</b>

### RISKS AND DISCLAIMERS

DOVEA GENETICS LIMITED ("DOVEA") AND SOUTH EASTERN CATTLE BREEDING SOCIETY LIMITED ("SECBS") DRAW YOUR ATTENTION TO THE FOLLOWING: 1 ANY TYPOGRAPHICAL, CLERICAL, OR OTHER ERROR OR OMISSION, MISDESCRIPTION OR MISTAKE IN ANY SALES LITERATURE, QUOTATION, PRICE LIST, ORDER CONFIRMATION, INVOICE OR OTHER DOCUMENT OR INFORMATION ISSUED BY ANY OF DOVEA OR SECBS (INCLUDING WITHOUT LIMITATION THIS DIRECTORY) SHALL BE SUBJECT TO CORRECTION WITHOUT ANY LIABILITY ON THE PART OF ANY OF DOVEA OR SECBS. NO SUCH ERROR, MISDESCRIPTION OR MISTAKE SHALL GIVE RISE TO ANY RIGHT OF ACTION, CLAIM OR ENTITLEMENT TO COMPENSATION OF ANY NATURE WHATSOEVER OR ANY RIGHT OF TERMINATION OR RECISSION.

2 ALL SAMPLES, DRAWINGS, DESCRIPTIVE MATTER, SPECIFICATIONS, ADVERTISING OR ANY OTHER PROMOTIONAL MATERIAL AND ANY DESCRIPTIONS OR ILLUSTRATIONS CONTAINED IN ANY DIRECTORY, CATALOGUES OR BROCHURES (INCLUDING WITHOUT LIMITATION THIS DIRECTORY) ARE ISSUED OR PUBLISHED FOR THE SOLE PURPOSE OF GIVING AN APPROXIMATE IDEA OF THE GOODS AND/OR THE SERVICES DESCRIBED IN THEM AND DO NOT CONSTITUTE ANY MATTERS OF FACT OR REPRESENTATION OR WARRANTY AS TO ITS SUBJECT MATTER OR INDUCING ANY PERSON TO ENTER INTO ANY CONTRACT. THEY SHALL NOT FORM PART OF ANY CONTRACT AND THERE SHALL BE NO SALE BY SAMPLE.

3 SEMEN IS THE PRODUCT OF A NATURAL BIOLOGICAL PROCESS OVER WHICH NEITHER DOVEA NOR SECBS HAS ANY DIRECT CONTROL AND NEITHER DOVEA NOR SECBS WARRANT OR REPRESENT THAT ANY SEMEN THAT ANY OF THEM SUPPLIES:

- (i) WILL RESULT IN A VIABLE PREGNANCY;
- (ii) WILL PRODUCE A CALF THAT EXHIBITS ALL OR ANY OF THE CHARACTERISTICS DESCRIBED IN ANY PROOF;
- (iii) WILL BE FREE FROM DEFECTS, INCLUDING GENETIC DEFECTS; OR
- (iv) WILL YIELD A PARTICULAR NUMBER OF CALVES.

4 IN THE CASE OF SEXED SEMEN, NEITHER DOVEA NOR SECBS WARRANTS OR REPRESENTS THAT THE SORTING LEVELS REFERRED TO IN ITS MARKETING LITERATURE WILL RESULT IN A CORRESPONDING SEX RATIO IN CALVES PRODUCED FROM SEMEN.

ALL ORDERS FOR ANY OF THE GOODS AND/OR SERVICES REFERRED TO IN THIS DIRECTORY SHALL BE SUBJECT TO DOVEA AND SECBS' TERMS AND CONDITIONS FOR THE SUPPLY OF GOODS AND/OR SERVICES AS AMENDED FROM TIME TO TIME. THE CURRENT VERSION OF SUCH TERMS CAN BE READ AT [WWW.DOVEAGENETICS.IE](http://WWW.DOVEAGENETICS.IE). YOUR ATTENTION IS DRAWN TO THE PROVISIONS OF THOSE TERMS HEADED:

- a) APPLICATION OF CONDITIONS AND FORMATION OF CONTRACT
- b) DESCRIPTION OF GOODS OR SERVICES
- c) SEMEN DISTRIBUTION SERVICES
- d) CUSTOMER'S OBLIGATIONS
- e) WARRANTIES
- f) LIMITATION OF LIABILITY

## DOVEA GENETICS SIRE ADVICE

Contact our Sire Advice team in Dovea Genetics on  
0504 21755 or 0873284317 or email [mhayes@doveagenetics.ie](mailto:mhayes@doveagenetics.ie)  
to receive advice on your breeding goals.

# NR9837

# DoveaGENETICS

# GENOMIC

## NR GARD P

NR: 100%

International ID  
RDCNORM000413857509 aAa: N/A

PED



### NORWEGIAN RED



Els Korsten

Paternal GG Dam of NR Gard P

### Kleiva P X Ihlingen

Dam: Gunda - 305 Day Milk Records

Lact	Milk Kg	Fat Kg	Prot. Kg	Solids Kg	Fat %	Protein %
Avg. of 1	5338	291	209	500	5.45	3.91

EBI Nov 23 Source ICBF		Rel.
EBI	€276	36%
Prod. SI	€91	57%
Milk Kg	119	57%
Fat	18kg +0.23%	57%
Protein	11kg +0.12%	57%
Fert. SI	€90	20%
Calv. Int	-4.70	22%
Survival %	2.46	13%
Beef	-€16	35%

EBI Nov 23 Source ICBF		Rel.
Calving	€52	14%
Calv. Diff. Cow	1.87%	24%
Calv. Diff. Hfr	4.78%	11%
Gest. Len (Days)	-3.77	11%
Health	€22	43%
Maint. SI	€25	32%
Mgmt. SI	€3	15%
Milk Time (Secs)	-21.72	20%
Temperament	-0.11	11%

NEW



Total Merit Index: 40		Norway Dec. 2023	
Milk Kg	105		
Fat	128kg	134%	
Protein	114kg	114%	
Milk, Fat & Protein Index		129	
Temperament	109	Milking Speed	96
Disease Res.	99	Fertility (dau.)	119
Mastitis Res.	108	Calving Ease	119
SCC	135	Udder Health	133
Type Traits			
Stature	104	Feet & Legs	109
Chest Width	90	Udder	106
Beef (Male)	94	Body Depth	102

- Highest NR Milk Subindex Sire
- +29Kg Of Milk Solids
- Dam 5.45% Fat & 3.91% Protein
- Maintenance €25

Norwegian Red

Norwegian Red

# NR5881

# DoveaGENETICS

## DAUGHTER PROVEN

## ROEN

NR: 100%

International ID  
RDCNORM000000011690 aAa: 516

PED

 **NORWEGIAN RED**



Roen (NR5881)

### Skei X Velsvik

Dam: 368 NOR - 305 Day Milk Records

Lact	Milk Kg	Fat Kg	Prot. Kg	Solids Kg	Fat %	Protein %
Avg. of 2	8423	502	358	860	4.24	3.28

Irish Daughter 305 Day Milk Records

Parity	Dtrs	Herds	Milk Kg	Fat Kg	Prot Kg	Solids Kg	Fat %	Prot %
1	72	34	5180	233	186	419	4.50	3.59

EBI Nov 23 Source ICBF			Rel.	EBI Nov 23 Source ICBF			Rel.
EBI	€308		77%	Calving	€39		97%
Prod. SI	€69		87%	Calv. Diff. Cow	2.19%		98%
Milk Kg	175		87%	Calv. Diff. Hfr	5.40%		98%
Fat	15kg	+0.13%	87%	Gest. Len (Days)	-2.78		99%
Protein	9kg	+0.06%	87%	Health	€21		63%
Fert. SI	€144		65%	Maint. SI	€27		50%
Calv. Int	-6.85		68%	Mgmt. SI	-€1		58%
Survival %	4.63		58%	Milk Time (Secs)	-13.34		78%
Beef	-€3		86%	Temperament	-0.15		43%



Total Merit Index: 15		Norway Dec. 2023	
Milk Kg	118		
Fat	131kg	116%	
Protein	122kg	102%	
Milk, Fat & Protein Index	129		
Temperament	118	Milking Speed	116
Disease Res.	109	Fertility (dau.)	99
Mastitis Res.	111	Calving Ease	121
SCC	107	Udder Health	108
Type Traits			
Stature	83	Feet & Legs	87
Chest Width	80	Udder	98
Beef (Male)	79	Body Depth	85

- No.1 NR EBI Sire €308
- Fertility €144
- Extremely Easy Calving

Norwegian Red

Norwegian Red

# NR4941



## DAUGHTER PROVEN

# KROVOLL

NR: 100%



International ID  
RDCNORM000000011921 aAa: 435



Daughter of Krovoll (NR4941)

### Reitan 2 X EIK

Dam: 611 NOR - 305 Day Milk Records

Lact	Milk Kg	Fat Kg	Prot. Kg	Solids Kg	Fat %	Protein %
Avg. of 2	9186	401	334	735	4.38	3.64

Irish Daughter 305 Day Milk Records

Parity	Dtrs	Herds	Milk Kg	Fat Kg	Prot Kg	Solids Kg	Fat %	Prot %
1	74	22	4689	200	170	370	4.27	3.63
2	47	18	5472	237	200	437	4.33	3.65

EBI Nov 23 Source ICBF			Rel.	EBI Nov 23 Source ICBF			Rel.
EBI	€254		83%	Calving	€52	93%	
Prod. SI	€66		94%	Calv. Diff. Cow	2.76%	94%	
Milk Kg	175		94%	Calv. Diff. Hfr	6.66%	73%	
Fat	10kg	+0.13%	94%	Gest. Len (Days)	-4.64	98%	
Protein	9kg	+0.11%	94%	Health	€23	66%	
Fert. SI	€87		73%	Maint. SI	€14	68%	
Calv. Int	-4.64		75%	Mgmt. SI	€4	60%	
Survival %	2.32		68%	Milk Time (Secs)	-14.28	83%	
Beef	€5		88%	Temperament	-0.02	41%	



Total Merit Index: 7		Norway Dec. 2023	
Milk Kg	97		
Fat	112kg	120%	
Protein	112kg	128%	
Milk, Fat & Protein Index	116		
Temperament	105	Milking Speed	101
Disease Res.	108	Fertility (dau.)	100
Mastitis Res.	108	Calving Ease	99
SCC	100	Udder Health	102
Type Traits			
Stature	117	Feet & Legs	69
Chest Width	115	Udder	102
Beef (Male)	104	Body Depth	113

- Proven Components & Moderate Milk KG
- No.1 Proven Protein % Bull in Norway (128)
- Hard Working Cows

Norwegian Red

Norwegian Red

# NR8826



## GENOMIC

### NR NERBY-P

NR: 100%

International ID  
RDCNORM000000012255 aAa: 432



NORWEGIAN RED



GGDam of NR Nerby -P (NR8826)

### Lysevoll X Nedrebo

Dam: 597 NOR - 305 Day Milk Records

Lact	Milk Kg	Fat Kg	Prot. Kg	Solids Kg	Fat %	Protein %
Avg. of 2	7566	399	302	701	5.28	3.99

EBI Nov 23 Source ICBF			Rel.	EBI Nov 23 Source ICBF			Rel.
EBI	€242		41%	Calving	€43		35%
Prod. SI	€63		59%	Calv. Diff. Cow	2.61%		52%
Milk Kg	42		59%	Calv. Diff. Hfr	6.44%		33%
Fat	11kg	+0.17%	59%	Gest. Len (Days)	-3.49		32%
Protein	7kg	+0.10%	59%	Health	€20		45%
Fert. SI	€84		22%	Maint. SI	€26		32%
Calv. Int	-4.72		24%	Mgmt. SI	€2		40%
Survival %	1.99		17%	Milk Time (Secs)	-18.92		55%
Beef	-€9		35%	Temperament	-0.11		28%



Total Merit Index: 41		Norway Dec. 2023	
Milk Kg	77		
Fat	106kg	148%	
Protein	87kg	129%	
Milk, Fat & Protein Index	111		
Temperament	111	Milking Speed	92
Disease Res.	99	Fertility (dau.)	116
Mastitis Res.	131	Calving Ease	98
SCC	142	Udder Health	143
Type Traits			
Stature	105	Feet & Legs	93
Chest Width	80	Udder	118
Beef (Male)	99	Body Depth	69

- No. 1 Protein % Norwegian Index Bull (129)
- No. 1 Fat % Norwegian Red Index Bull (148)
- No.1 Udder Health Index Bull (143)
- Dam is 5% Fat & 4% Protein

Norwegian Red

Norwegian Red

# NR8829

# DoveaGENETICS

## DAUGHTER PROVEN

## SAUSVATN-PP

NR: 100%

International ID  
RDCNORM000000012116 aAa: N/A

PED

 **NORWEGIAN RED**



Sausvatn-PP (NR8829)

### Ofstad X Olterud

Dam: Bendikte - 305 Day Milk Records

Lact	Milk Kg	Fat Kg	Prot. Kg	Solids Kg	Fat %	Protein %
Avg. of 5	8198	437	301	738	5.35	3.67

EBI Nov 23 <small>Source ICBF</small>			Rel.	EBI Nov 23 <small>Source ICBF</small>			Rel.
EBI	€240		46%	Calving	€44	43%	
Prod. SI	€48		66%	Calv. Diff. Cow	2.18%	81%	
Milk Kg	-28		66%	Calv. Diff. Hfr	5.66%	34%	
Fat	8kg	+0.15%	66%	Gest. Len (Days)	-3.48	32%	
Protein	5kg	+0.11%	66%	Health	€25	47%	
Fert. SI	€88		29%	Maint. SI	€25	32%	
Calv. Int	-4.09		31%	Mgmt. SI	-€3	41%	
Survival %	2.92		25%	Milk Time (Secs)	-2.12	57%	
Beef	-€1		35%	Temperament	-0.09	29%	



Total Merit Index: 29		Norway Dec. 2023	
Milk Kg	113		
Fat	123kg	118%	
Protein	123kg	121%	
Milk, Fat & Protein Index	131		
Temperament	110	Milking Speed	99
Disease Res.	76	Fertility (dau.)	93
Mastitis Res.	94	Calving Ease	105
SCC	117	Udder Health	113
Type Traits			
Stature	92	Feet & Legs	98
Chest Width	96	Udder	105
Beef (Male)	84	Body Depth	109

- Higher Production Bull (131)
- Very High Percentages
- Homozygous Polled
- Low Stature

Norwegian Red

Norwegian Red

# S4184

## NR LIE

NR: 100%

International ID  
RDCNORM000000012241 aAa: 432



### NORWEGIAN RED



Els Korsten

Half Sister of NR Lie (S4184)

### Storflor X Alm

Dam: 186 NOR - 305 Day Milk Records

Lact	Milk Kg	Fat Kg	Prot. Kg	Solids Kg	Fat %	Protein %
Avg. of 3	7605	361	287	648	4.75	3.77

EBI Nov 23 <small>Source ICBF</small>			Rel.	EBI Nov 23 <small>Source ICBF</small>			Rel.
EBI	€216		46%	Calving	€49		44%
Prod. SI	€64		65%	Calv. Diff. Cow	2.42%		56%
Milk Kg	88		65%	Calv. Diff. Hfr	6.08%		40%
Fat	12kg	+0.15%	65%	Gest. Len (Days)	-4.17		43%
Protein	8kg	+0.09%	65%	Health	€8		47%
Fert. SI	€77		29%	Maint. SI	€6		32%
Calv. Int	-3.97		32%	Mgmt. SI	€1		40%
Survival %	2.21		22%	Milk Time (Secs)	-11.99		56%
Beef	€11		36%	Temperament	-0.08		28%



Total Merit Index: 48		Norway Dec. 2023	
Milk Kg	114		
Fat	124kg	121%	
Protein	122kg	120%	
Milk, Fat & Protein Index	132		
Temperament	111	Milking Speed	104
Disease Res.	100	Fertility (dau.)	111
Mastitis Res.	113	Calving Ease	94
SCC	116	Udder Health	117
Type Traits			
Stature	117	Feet & Legs	106
Chest Width	99	Udder	126
Beef (Male)	108	Body Depth	103

- Flawless Norwegian Index
- Milk Kg & Components
- Low Stature Balanced Frames & Perfect Udders (126)

Norwegian Red

Norwegian Red

# NR8832



## GENOMIC

# NR SKOIEN

NR: 100%

International ID  
RDCNORM000000012222 aAa: 432

PED

 **NORWEGIAN RED**



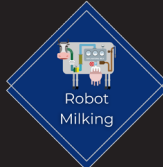
Half Sister of NR Skoien (NR8832)

## Storflor X Alm

Dam: Anneli - 305 Day Milk Records

Lact	Milk Kg	Fat Kg	Prot. Kg	Solids Kg	Fat %	Protein %
Avg. of 3	9880	442	353	895	4.48	3.58

EBI Nov 23 <small>Source ICBF</small>			Rel.	EBI Nov 23 <small>Source ICBF</small>			Rel.
EBI	€245		48%	Calving	€56	53%	
Prod. SI	€54		65%	Calv. Diff. Cow	2.27%	84%	
Milk Kg	54		65%	Calv. Diff. Hfr	6.33%	41%	
Fat	11kg	+0.16%	65%	Gest. Len (Days)	-5.21	43%	
Protein	6kg	+0.07%	65%	Health	€16	49%	
Fert. SI	€87		30%	Maint. SI	€16	33%	
Calv. Int	-4.34		33%	Mgmt. SI	€7	43%	
Survival %	2.60		23%	Milk Time (Secs)	-33.07	59%	
Beef	€2		36%	Temperament	-0.09	30%	



Total Merit Index: 55		Norway Dec. 2023	
Milk Kg	124		
Fat	136kg	117%	
Protein	135kg	116%	
Milk, Fat & Protein Index	140		
Temperament	112	Milking Speed	104
Disease Res.	105	Fertility (dau.)	110
Mastitis Res.	119	Calving Ease	103
SCC	122	Udder Health	123
Type Traits			
Stature	132	Feet & Legs	118
Chest Width	100	Udder	130
Beef (Male)	109	Body Depth	104

- No.1 Sire on Norwegian Index (TMI 55)
- Well Balanced Bull with Great Fertility
- No.1 Norwegian Red for Direct Gestation Length
- Impressive Heifers Inspected

Norwegian Red

Norwegian Red

# NR6766

# DoveaGENETICS

# DAUGHTER PROVEN

## MAURSTAD-PP

NR: 100%

International ID  
RDCNORM000000012009 aAa: 423



NORWEGIAN RED



Elé Korst

Half Sister of Maurstad-PP (NR6766)

Sitje X Nymoer-P

Dam: Bente - 305 Day Milk Records

Lact	Milk Kg	Fat Kg	Prot. Kg	Solids Kg	Fat %	Protein %
Avg. of 3	7135	308	260	568	4.31	3.64

EBI Nov 23 <small>Source ICBF</small>			Rel.	EBI Nov 23 <small>Source ICBF</small>			Rel.
EBI	€268		66%	Calving	€63		88%
Prod. SI	€65		79%	Calv. Diff. Cow	2.02%		91%
Milk Kg	76		79%	Calv. Diff. Hfr	5.82%		71%
Fat	14kg	+0.19%	79%	Gest. Len (Days)	-5.87		95%
Protein	7kg	+0.08%	79%	Health	€7		54%
Fert. SI	€94		59%	Maint. SI	€21		43%
Calv. Int	-6.30		61%	Mgmt. SI	€1		46%
Survival %	1.19		53%	Milk Time (Secs)	-11.34		64%
Beef	€7		51%	Temperament	-0.07		32%



Total Merit Index: 21		Norway Dec. 2023	
Milk Kg	97		
Fat	109kg	120%	
Protein	105kg	118%	
Milk, Fat & Protein Index	113		
Temperament	116	Milking Speed	107
Disease Res.	111	Fertility (dau.)	102
Mastitis Res.	102	Calving Ease	115
SCC	90	Udder Health	91
Type Traits			
Stature	107	Feet & Legs	118
Chest Width	111	Udder	108
Beef (Male)	99	Body Depth	91

- Very Well Proven
- Balanced Index
- Homozygous Polled

Norwegian Red

Norwegian Red

# NR4944

## DAUGHTER PROVEN

NR: 100%

# HUSTAD

International ID  
RDCNORM000000011817 aAa: 435



Crossbred Hustad Daughter in New Zealand

PED

Easy Calving

Fertility Improver

Robot Milking

## Reitan 2 X Velsvik

Irish Daughter 305 Day Milk Records

Parity	Dtrs	Herds	Milk Kg	Fat Kg	Prot Kg	Solids Kg	Fat %	Prot %
1	10	4	4706	218	171	389	4.63	3.63
2	5	3	6121	275	218	493	4.49	3.56

EBI Nov 23	Source ICBF	Rel.	EBI Nov 23	Source ICBF	Rel.
EBI	€247	71%	Calving	€54	81%
Prod. SI	€52	86%	Calv. Diff. Cow	2.54%	89%
Milk Kg	28	86%	Calv. Diff. Hfr	5.47%	62%
Fat	10kg +0.16%	86%	Gest. Len (Days)	-4.57	89%
Protein	6kg +0.08%	86%	Health	€9	61%
Fert. SI	€102	61%	Maint. SI	€12	51%
Calv. Int	-5.00	64%	Mgmt. SI	€4	55%
Survival %	3.11	52%	Milk Time (Secs)	-24.15	73%
Beef	€4	63%	Temperament	-0.1	41%

- Proven Percentages in Irish Systems
- Easy Calving - Suitable for Heifers

# NR8097

## DAUGHTER PROVEN

NR: 100%

# BOLLINGMO

International ID  
RDCNORM000000011441 aAa: N/A



Half Sister to Bollingmo (NR8097)

PED

Health Improver

Fertility Improver

Reduced Cow Size

## Tranmæl X Hauske

Dam: Fredlin - 305 Day Milk Records

Lact	Milk Kg	Fat Kg	Prot. Kg	Solids Kg	Fat %	Protein %
Avg. of 4	8903	399	304	703	4.48	3.42

EBI Nov 23	Source ICBF	Rel.	EBI Nov 23	Source ICBF	Rel.
EBI	€299	61%	Calving	€26	70%
Prod. SI	€65	80%	Calv. Diff. Cow	3.27%	81%
Milk Kg	79	80%	Calv. Diff. Hfr	9.07%	48%
Fat	11kg +0.13%	80%	Gest. Len (Days)	-3.48	76%
Protein	8kg +0.10%	80%	Health	€16	44%
Fert. SI	€148	57%	Maint. SI	€32	32%
Calv. Int	-7.57	59%	Mgmt. SI	-€5	39%
Survival %	4.22	52%	Milk Time (Secs)	1.87	54%
Beef	-€5	35%	Temperament	-0.11	28%

- 19 Kg of Solids
- Maintenance €32

Norwegian Red

Norwegian Red

# SI7911



## DAUGHTER PROVEN

# HOKUSPOKUS

SI: 100%

International ID  
SIMDEUM000951718913 aAa: 531

PED



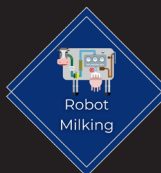
Talla, Daughter of HokusPokus (SI7911)

## Hurly X Narr \*TA

### Daughter 305 Day Milk Records

Parity	Dtrs	Milk Kg	Fat Kg	Prot Kg	Solids Kg	Fat %	Prot %
1	819	7663	333	276	608	4.34	3.60
2	545	8444	367	315	682	4.35	3.73
3	162	8573	367	307	674	4.28	3.58

EBI Nov 23 Source ICBF			Rel.	EBI Nov 23 Source ICBF			Rel.
EBI	€148		50%	Calving	-€25		88%
Prod. SI	€73		75%	Calv. Diff. Cow	5.05%		90%
Milk Kg	76		75%	Calv. Diff. Hfr	12.58%		60%
Fat	12kg	+0.15%	75%	Gest. Len (Days)	-0.17		96%
Protein	9kg	+0.12%	75%	Health	€14		44%
Fert. SI	€41		15%	Maint. SI	€0		33%
Calv. Int	-2.19		17%	Mgmt. SI	-€3		38%
Survival %	1.11		9%	Milk Time (Secs)	-35.73		56%
Beef	€66		39%	Temperament	-0.38		24%



Total Merit Index: 133				Germany Dec. 2023			
Milk		MI 119		(Rel. 99%)			
Milk Kg				+360			
Fat		+28kg		+0.15%			
Protein		+27kg		+0.17%			
Beef				Beef Index 109		(Rel. 99%)	
Daily Net Gain	109	Carcass %	110	EUROP	101		
Fitness				Fitness Index 115		(Rel. 97%)	
Persistence	99	Milking Speed	99				
Vitality	107	Fertility (mat.)	114				
Longevity	104	Calving Ease	107				
SCC	114	Udder Health	115				
				Type Traits			
Frame	110	Feet & Legs	113				
Muscling	100	Udder	124				

- Hottest Bull in the Breed TMI (133)
- Daughters Average 8444 Kg, 4.35% Fat & 3.73% Protein
- Perfect Udders & Teat Placement for Robotic mMilking
- Easy Calving & Great Fertility

Fleckvieh

Fleckvieh

# SI9061



## DAUGHTER PROVEN

# VLATURO

SI: 100%

International ID  
SIMDEUM000816476213 aAa: 564

PED



GGI-SPERMEX  
Genetics made in Germany



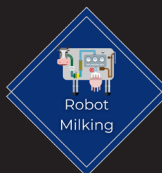
Daughter of Vlaturo (SI9061)

## Vlaro X Hutera

### Daughter 305 Day Milk Records

Parity	Dtrs	Milk Kg	Fat Kg	Prot Kg	Solids Kg	Fat %	Prot %
1	610	7036	314	247	561	4.46	3.51
2	442	7916	365	289	654	4.61	3.65
3	185	8489	386	314	700	4.55	3.70

EBI Nov 23 Source ICBF			Rel.	EBI Nov 23 Source ICBF			Rel.
EBI	€182		48%	Calving	-€1		36%
Prod. SI	€72		76%	Calv. Diff. Cow	3.61%		41%
Milk Kg	77		76%	Calv. Diff. Hfr	9.45%		35%
Fat	17kg	+0.23%	76%	Gest. Len (Days)	0.53		37%
Protein	8kg	+0.09%	76%	Health	€26		48%
Fert. SI	€71		22%	Maint. SI	-€19		35%
Calv. Int	-3.88		23%	Mgmt. SI	-€14		39%
Survival %	1.79		19%	Milk Time (Secs)	-20.3		60%
Beef	€70		38%	Temperament	-0.56		23%



Robot  
Milking



A2/A2



Easy  
Calving

### Total Merit Index: 128 Germany Dec. 2023

Milk		MI 120 (Rel. 99%)	
Milk Kg	+65		
Fat	+49kg	+0.57%	
Protein	+14kg	+0.14%	
Beef	Beef Index 103 (Rel. 98%)		
Daily Net Gain	100	Carcass %	105
		EUROP	101
Fitness		Fitness Index 110 (Rel. 96%)	
Persistency	105	Milking Speed	106
Vitality	99	Fertility (mat.)	112
Longevity	101	Calving Ease	109
SCC	108	Udder Health	109
Type Traits			
Frame	112	Feet & Legs	112
Muscling	104	Udder	112

- Incredible Solids at +0.57% Fat & Protein +0.14%
- Daughters Average 7916Kg 4.61% Fat & 3.65% Protein
- Gdam Produced 4.85% Fat & 3.82% Protein

Fleckvieh

Fleckvieh

# SUNSHINE

SI: 100%

 International ID  
 SIMDEUM000955642886 aAa: 543

PED



**NEW**

Milk Solids Improver

A2/A2

Sexed Semen Available

<b>Total Merit Index: 138</b>				<b>Germany Dec. 2023</b>	
<b>Milk</b>		MI 125 (Rel. 87%)			
<b>Milk Kg</b>		+377			
<b>Fat</b>		+49kg	+0.39%		
<b>Protein</b>		+24kg	+0.13%		
<b>Beef</b>		Beef Index 109 (Rel. 80%)			
Daily Net Gain	102	Carcass %	108	EUROP	109
<b>Fitness</b>			Fitness Index 119 (Rel. 86%)		
Persistency	109	Milking Speed	120		
Vitality	112	Fertility (mat.)	113		
Longevity	115	Calving Ease	109		
SCC	112	Udder Health	109		
<b>Type Traits</b>					
Frame	96	Feet & Legs	101		
Muscling	106	Udder	106		

## Sisyphus X Waban

Dam: Livia - 305 Day Milk Records

Lact	Milk Kg	Fat Kg	Prot. Kg	Solids Kg	Fat %	Protein %
Avg. of 4	8505	420	313	733	4.94	3.68

- Smaller Frame, One of the Most Used Genomic Sires in Germany
- Strength & Muscularity, Fit Calves
- Great Components +.039 & +.013%

Fleckvieh

Fleckvieh

# SI6580



## DAUGHTER PROVEN

# IRREGUT PS

SI: 100%

International ID  
SIMDEUM000950075810 aAa: 435

PED



KeLeKi

Daughter of Irregut PS (SI6580)

## Irokese PS X Mungo PP

### Daughter 305 Day Milk Records

Parity	Dtrs	Milk Kg	Fat Kg	Prot Kg	Solids Kg	Fat %	Prot %
1	1289	7527	342	272	614	4.54	3.62
2	539	8543	384	315	700	4.5	3.69
3	220	8608	392	316	708	4.55	3.67

EBI Nov 23 Source ICBF			Rel.	EBI Nov 23 Source ICBF			Rel.
EBI	€166		55%	Calving	-€24		93%
Prod. SI	€111		78%	Calv. Diff. Cow	4.47%		97%
Milk Kg	236		78%	Calv. Diff. Hfr	10.41%		57%
Fat	24kg	+0.25%	78%	Gest. Len (Days)	1.83		99%
Protein	14kg	+0.10%	78%	Health	€22		46%
Fert. SI	€43		17%	Maint. SI	-€10		37%
Calv. Int	-2.48		19%	Mgmt. SI	-€11		38%
Survival %	0.97		12%	Milk Time (Secs)	-21.44		55%
Beef	€64		61%	Temperament	-0.49		24%



Total Merit Index: 123				Germany Dec. 2023			
Milk		MI 131		(Rel. 99%)			
Milk Kg				+631			
Fat		+58kg		+0.36%			
Protein		+37kg		+0.17%			
Beef				Beef Index 110		(Rel. 99%)	
Daily Net Gain	120	Carcass %	105	EUROP	104		
Fitness				Fitness Index 85		(Rel. 97%)	
Persistency	93	Milking Speed	101				
Vitality	98	Fertility (mat.)	81				
Longevity	87	Calving Ease	101				
SCC	100	Udder Health	101				
Type Traits							
Frame	111	Feet & Legs	95				
Muscling	110	Udder	96				

- Highest Protein Sire +0.17%
- Daughters Average 8543 Kg, 4.50% Fat & 3.69% Protein
- Adds Capacity & Strength
- High EBI (€166)

Fleckvieh

Fleckvieh

# SI5791

# DoveaGENETICS

## DAUGHTER PROVEN

# SISYPHUS

SI: 100%

International ID  
SIMDEUM000666439378 aAa: 435

PED



GGI-SPERMEX  
Genetics made in Germany



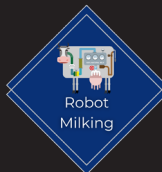
Daughter of Sisyphus (SI5791)

## Symposium X Wille

### Daughter 305 Day Milk Records

Parity	Dtrs	Milk Kg	Fat Kg	Prot Kg	Solids Kg	Fat %	Prot %
1	4670	7366	320	259	579	4.34	3.52
2	1941	8031	353	288	642	4.4	3.59
3	1288	8693	378	307	685	4.35	3.53

EBI Nov 23 Source ICBF			Rel.	EBI Nov 23 Source ICBF			Rel.
EBI	€151		76%	Calving	€4		97%
Prod. SI	€69		84%	Calv. Diff. Cow	3.72%		98%
Milk Kg	173		84%	Calv. Diff. Hfr	8.96%		91%
Fat	12kg	+0.09%	84%	Gest. Len (Days)	0.20		99%
Protein	10kg	+0.07%	84%	Health	€23		62%
Fert. SI	€30		60%	Maint. SI	-€8		60%
Calv. Int	-0.90		57%	Mgmt. SI	-€10		54%
Survival %	1.47		69%	Milk Time (Secs)	-25.65		81%
Beef	€70		94%	Temperament	-0.50		32%



Total Merit Index: 124				Germany Dec. 2023			
Milk		MI 110		(Rel. 99%)			
Milk Kg				+95			
Fat		+25kg		+0.26%			
Protein		+7kg		+0.05%			
Beef				Beef Index 114		(Rel. 99%)	
Daily Net Gain	109	Carcass %	108	EUROP	115		
Fitness				Fitness Index 111		(Rel. 99%)	
Persistence	101	Milking Speed	121				
Vitality	105	Fertility (mat.)	112				
Longevity	102	Calving Ease	112				
SCC	113	Udder Health	108				
Type Traits							
Frame	89	Feet & Legs	100				
Muscling	113	Udder	120				

- Small Frame with Plenty Of Milk
- Long Lasting Cows with Great Fertility (112)
- Easy Calving- Suitable for Heifers
- Grazing Bull

Fleckvieh

Fleckvieh

# SI7893

## DAUGHTER PROVEN

SI: 100%

# VOLLGENIAL

International ID  
SIMDEUM000951128330 aAa: N/A

PED



Daughter of Vollgenial (SI7893)

## Voltaire X Wonderfull

### Daughter 305 Day Milk Records

Parity	Dtrs	Milk Kg	Fat Kg	Prot Kg	Solids Kg	Fat %	Prot %
1	292	7171	328	254	582	4.58	3.54
2	220	7711	352	280	632	4.56	3.63
3	141	8401	388	302	691	4.62	3.60

EBI Nov 23		Source ICBF	Rel.	EBI Nov 23		Source ICBF	Rel.
EBI		€158	51%	Calving		-€7	70%
Prod. SI		€65	78%	Calv. Diff. Cow		3.67%	65%
Milk Kg		66	78%	Calv. Diff. Hfr		8.96%	40%
Fat		12kg	+0.16%	Gest. Len (Days)		1.52	82%
Protein		8kg	+0.10%	Health		€16	46%
Fert. SI		€40	18%	Maint. SI		€4	34%
Calv. Int		-1.91	20%	Mgmt. SI		-€4	38%
Survival %		1.27	12%	Milk Time (Secs)		-54.54	56%
Beef		€58	41%	Temperament		-0.58	23%

- + 0.46 % Fat & +0.17 % Protein
- Daughters Average 7711 Kg, 4.56 % Fat & 3.63 % Protein

# SI6577

## DAUGHTER PROVEN

SI: 100%

# WOMBA

International ID  
SIMDEUM000948763199 aAa: 435

PED



Daughter of Womba (SI6577)

## GS Wohltat X Samba

### Daughter 305 Day Milk Records

Parity	Dtrs	Milk Kg	Fat Kg	Prot Kg	Solids Kg	Fat %	Prot %
1	505	6756	288	243	531	4.26	3.59
2	398	7632	327	282	609	4.29	3.69
3	324	7985	341	289	630	4.27	3.62

EBI Nov 23		Source ICBF	Rel.	EBI Nov 23		Source ICBF	Rel.
EBI		€187	53%	Calving		€6	78%
Prod. SI		€76	78%	Calv. Diff. Cow		3.70%	70%
Milk Kg		100	78%	Calv. Diff. Hfr		8.74%	63%
Fat		11kg	+0.12%	Gest. Len (Days)		0.04	90%
Protein		11kg	+0.12%	Health		€18	46%
Fert. SI		€55	19%	Maint. SI		-€7	36%
Calv. Int		-3.42	21%	Mgmt. SI		-€2	37%
Survival %		0.99	14%	Milk Time (Secs)		-46.51	56%
Beef		€57	47%	Temperament		-0.46	22%

- Exceptional Longevity (113)
- Daughters Average 7632 Kg, 4.29 % Fat & 3.69 % Protein

Fleckvieh

Fleckvieh

# SI7707

# DoveaGENETICS

## DAUGHTER PROVEN

# VALENTINO

SI: 100%



International ID  
SIMDEUM000948023764 aAa: 453



EBI Nov 23 <small>Source ICBF</small>		Rel.
EBI	€185	50%
Prod. SI	€67	76%
Milk Kg	209	76%
Fat	10kg +0.02%	76%
Protein	11kg +0.07%	76%
Fert. SI	€71	20%
Calv. Int	-4.07	21%
Survival %	1.57	16%
Beef	€67	41%

EBI Nov 23 <small>Source ICBF</small>		Rel.
Calving	-€12	58%
Calv. Diff. Cow	3.57%	55%
Calv. Diff. Hfr	8.31%	35%
Gest. Len (Days)	2.48	67%
Health	€18	45%
Maint. SI	€2	38%
Mgmt. SI	-€11	37%
Milk Time (Secs)	-14.96	55%
Temperament	-0.44	22%

Total Merit Index: 108		Germany Dec. 2023	
Milk	MI 107 (Rel. 99%)		
Milk Kg	+104		
Fat	+13kg	+0.11%	
Protein	+9kg	+0.06%	
Beef	Beef Index 119 (Rel. 99%)		
Daily Net Gain	124	Carcass %	111 EUROP 113
Fitness	Fitness Index 91 (Rel. 98%)		
Persistency	90	Milking Speed	105
Vitality	88	Fertility (mat.)	89
Longevity	92	Calving Ease	86
SCC	108	Udder Health	107
Type Traits			
Frame	94	Feet & Legs	95
Muscling	116	Udder	110

Daughter of Valentino (SI7707)

## Vanadin X Rau

Daughter 305 Day Milk Records

Parity	Dtrs	Milk Kg	Fat Kg	Prot Kg	Solids Kg	Fat %	Prot %
1	1025	6698	285	234	519	4.25	3.50
2	696	7772	334	276	610	4.30	3.55
3	456	8296	357	291	648	4.30	3.51

- Moderate Milk & Nice Components
- Daughters Average 7772 kg Milk, 4.3 % Fat & 3.55% Protein
- Improves Beef Characteristics
- Sexed Semen Only

Fleckvieh

Fleckvieh

# SUPREME JB

MO : 100%

 International ID  
 MONFRAM004416580707 aAa: 423

PED



Dam of Supreme JB

## Ocelot X Mauleon JB

Dam: 305 Day Milk Records

Lact	Milk Kg	Fat Kg	Prot. Kg	Solids Kg	Fat %	Protein %
2nd Lact	9176	375	376	752	4.09	4.10

NEW


 Milk Solids  
Improver

 Easy  
Calving

 Sexed  
Semen  
Available

ISU: 163		(Rel: 75%)	France Dec. 2023
Daughters		0	
INEL		66	
Milk		529	
Fat		45kg	0.40%
Protein		51kg	0.52%
Udder Health	-0.4	Reproduction	2
SCC	-0.5	Fertility (Cows)	1.6
Mastitis	0	Fertility (Heifers)	1.6
Longevity	1.2	Calving Ease	95
Temperament	97	Milking Speed	118
Type		123	
Format	100	Feet & Legs	121
Muscling	94	Udder	128
Teats	104	Beef	94

- The No.1 Protein % Sire in the Breed
- +0.52% Protein & +0.4% Fat
- 4% Protein Dam
- Great Udders

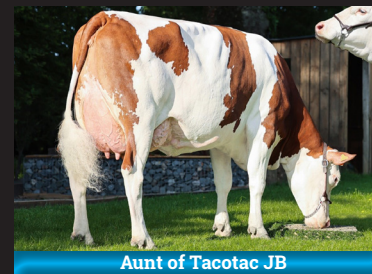
Montbeliarde

Montbeliarde

# TACOTAC JB

MO : 100%

 International ID  
 MONFRAM004416580763 aAa: 561

Aunt of Tacotac JB

NEW


 Easy  
Calving

 Robot  
Milking

 Sexed  
Semen  
Available

ISU: 178		(Rel: 71%) France Dec. 2023	
Daughters		0	
INEL		46	
Milk		652	
Fat		41kg	0.23%
Protein		35kg	0.21%
Udder Health	2.5	Reproduction	0.9
SCC	2.6	Fertility (Cows)	1.1
Mastitis	2.1	Fertility (Heifers)	0.6
Longevity	2.6	Calving Ease	95
Temperament	107	Milking Speed	107
Type		121	
Format	101	Feet & Legs	115
Muscling	105	Udder	125
Teats	113	Beef	105

Dam of Tacotac JB

## Perdu JB X Milton

Dam: 305 Day Milk Records

Lact	Milk Kg	Fat Kg	Prot. Kg	Solids Kg	Fat %	Protein %
1st lact.	7683	331	272	603	4.31	3.54

- High Component, High ISU Sire
- Longevity Improver (2.6)
- Adds Chest & Rump Width

Montbeliarde

Montbeliarde

# NITCHI JB

MO : 100%

 International ID  
 MONFRAM002252043965 aAa: 561

PED



Daughter of Nitchi JB

## Hitchi X Triomphe

Dam: 305 Day Milk Records

Lact	Milk Kg	Fat Kg	Prot. Kg	Solids Kg	Fat %	Protein %
4th lact.	8483	320	305	625	3.77	3.60



Nitchi JB



ISU: 142		(Rel: 95%)	France Dec. 2023	
Daughters			392	
INEL			40	
Milk			539	
Fat		29kg	0.09%	
Protein		33kg	0.2%	
Udder Health	0.2	Reproduction	0.5	
SCC	0.1	Fertility (Cows)	0.8	
Mastitis	0.3	Fertility (Heifers)	1.0	
Longevity	0.3	Calving Ease	95	
Temperament	115	Milking Speed	110	
Type		120		
Format	99	Feet & Legs	120	
Muscling	96	Udder	123	
Teats	102	Beef	96	

- Daughter Proven Production Sire
- Frames Perfectly Balanced
- Excellent Feet & Legs

Montbeliarde

Montbeliarde

# MO5638

# DoveaGENETICS

## DAUGHTER PROVEN

## NEUTRINO

MO : 100%

International ID  
MONFRAM003803364134 aAa: 513

PED



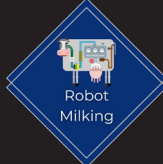
Idee, Dam of Neutrino (MO5638)



Daughter of Neutrino (MO5638)



Strength



Robot  
Milking



Sexed  
Semen  
Available

## Jilbeer X Fadil

### Daughter 305 Day Milk Records

Parity	Dtrs	Milk Kg	Fat Kg	Prot Kg	Solids Kg	Fat %	Prot %
1	1368	8781	396	334	730	4.51	3.80

ISU: 158		(Rel: 95%)	France Dec. 2023
Daughters		1368	
INEL		81	
Milk		861	
Fat		70kg	0.47%
Protein		62kg	0.45%
Udder Health	-0.3	Reproduction	-0.2
SCC	-0.3	Fertility (Cows)	-0.2
Mastitis	-0.2	Fertility (Heifers)	-0.6
Longevity	-0.3	Calving Ease	95
Temperament	103	Milking Speed	103
Type		111	
Format	103	Feet & Legs	113
Muscling	108	Udder	105
Teats	94	Beef	108

- Daughter Proven Component Specialist
- +0.45% Protein & +0.47% Fat
- Daughters (1368) Average 8781 Kg Milk, 4.51% Fat & 3.80% Protein
- Low Stature & Strength

Montbeliarde

Montbeliarde

# MO8844

## PAVEL

MO : 100%

International ID  
MONFRAM007402852739 aAa: 243

PED



Narcisse, Dam of Pavel (MO8844)

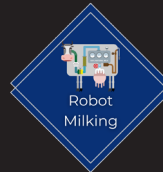


Narcisse, Dam of Pavel (MO8844)

### Neutrino X Ingenio

Dam: 305 Day Milk Records

Lact	Milk Kg	Fat Kg	Prot. Kg	Solids Kg	Fat %	Protein %
3rd lact	12124	506	446	952	4.17	3.68



Robot Milking



Health Improver



Easy Calving

ISU: 171		(Rel: 77%) France Dec. 2023	
Daughters		0	
INEL		73	
Milk		1013	
Fat	66kg	0.37%	
Protein	56kg	0.32%	
Udder Health	1.0	Reproduction	0.0
SCC	+1.1	Fertility (Cows)	+0.4
Mastitis	+0.6	Fertility (Heifers)	-0.1
Longevity	0.6	Calving Ease	95
Temperament	108	Milking Speed	101
Type		119	
Format	102	Feet & Legs	112
Muscling	107	Udder	122
Teats	110	Beef	107

- Neutrino Son with 1013kg Milk
- Udder Improver 122
- +122 Kg of Solids

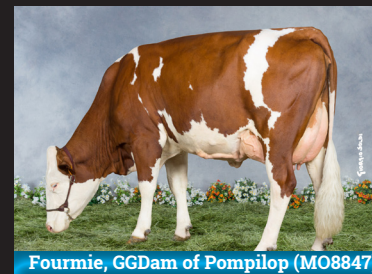
# MO8847

## POMPILOP

MO : 100%

International ID  
MONFRAM002539746173 aAa: 246

PED



Fourmie, GGDam of Pompilop (MO8847)

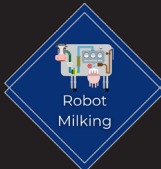


Orange, Dam of Pompilop (MO8847)

### Naruto X Lonestar

Dam: 305 Day Milk Records

Lact	Milk Kg	Fat Kg	Prot. Kg	Solids Kg	Fat %	Protein %
2nd lact	8975	431	357	788	4.80	3.98



ISU: 154		(Rel: 76%)	France Dec. 2023
Daughters		0	
INEL		53	
Milk		794	
Fat	42kg	0.19%	
Protein	42kg	0.26%	
Udder Health	0.8	Reproduction	-0.2
SCC	+0.8	Fertility (Cows)	+0.9
Mastitis	+0.7	Fertility (Heifers)	+0.4
Longevity	1.2	Calving Ease	95
Temperament	106	Milking Speed	107
Type		121	
Format	99	Feet & Legs	118
Muscling	96	Udder	126
Teats	98	Beef	96

- Dam Producing 4% Protein & 4.8% Fat
- High Components
- Udder Specialist 126

# MO7788

## PUNTO

MO : 100%

International ID  
MONFRAM003564460732 aAa: 651

PED



Papouille, Half Sister of Punto (MO7788)

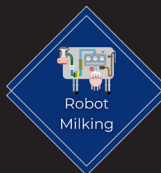


Nivea, Dam of Punto (MO7788)

### Milton X Jasmino

Dam: 305 Day Milk Records

Lact	Milk Kg	Fat Kg	Prot. Kg	Solids Kg	Fat %	Protein %
4th lact	9425	385	333	718	4.09	3.53



ISU: 172		(Rel: 77%)	France Dec. 2023
Daughters		0	
INEL		50	
Milk		643	
Fat		56kg	0.45%
Protein		35kg	0.22%
Udder Health	1.6	Reproduction	1.3
SCC	+1.7	Fertility (Cows)	+1.7
Mastitis	+1.1	Fertility (Heifers)	+1.5
Longevity	1.9	Calving Ease	95
Temperament	110	Milking Speed	100
Type		117	
Format	89	Feet & Legs	121
Muscling	87	Udder	128
Teats	107	Beef	87

- Volume with Percentages
- Excellent Udder and Feet & Legs
- High Component Dam

# MO9163

## DAUGHTER PROVEN

MO: 100%

# MONDUCIEL

International ID  
MONFRAM002545109367 aAa: 546



Daughter of Monduciel (MO9163)

PED



## Itachi JB X Uclair

Daughter 305 Day Milk Records

Parity	Dtrs	Milk Kg	Fat Kg	Prot Kg	Solids Kg	Fat %	Prot %
1	480	8438	376	316	692	4.46	3.74

ISU: 140 (Rel: 95%) France Dec. 2023

Daughters 480

INEL 46

Milk 178

Fat 39kg 0.45%

Protein 33kg 0.40%

Udder Health 0.4 Reproduction -0.4

SCC +0.3 Fertility (Cows) -1.0

Mastitis +0.5 Fertility (Heifers) +0.4

Longevity 0.3 Calving Ease 95

Temperament 120 Milking Speed 104

Type		109	
Format	96	F & L	109
Muscling	101	Udder	113
Teats	105	Beef	101

- Great New Proven Bull with Top Solids
- Daughters (480) Avg. 8348 Kg, 4.46% Fat & 3.74% Protein

# MO6505

## DAUGHTER PROVEN

MO: 100%

# OTOLIB

International ID  
MONFRAM006868690819 aAa: 615



Dam of Otolib (MO6505)

PED



## Manitoba X Harper

Dam: 305 Day Milk Records

Lact	Milk Kg	Fat Kg	Prot. Kg	Solids Kg	Fat %	Protein %
3rd lact	12795	576	502	1078	4.50	3.92

ISU: 159 (Rel: 76%) France Dec. 2023

Daughters 3

INEL 32

Milk 116

Fat 57kg 0.78%

Protein 15kg 0.19%

Udder Health 1.1 Reproduction 1.5

SCC +1.1 Fertility (Cows) +1.2

Mastitis +1.1 Fertility (Heifers) +0.9

Longevity 0.9 Calving Ease 95

Temperament 109 Milking Speed 111

Type		120	
Format	98	F & L	117
Muscling	104	Udder	124
Teats	108	Beef	104

- Low Stature Grazing Cows
- Extreme Fat % +0.78

Montbeliarde

Montbeliarde

# AY7053

## DAUGHTER PROVEN

AY: 100%

# VISSERDALE SURANO-ET

International ID  
RDCCANM000012211591 aAa: 465

GENEX



Visserdale Selena EX90, Dam of Surano

PEM



## Valpas X Rockstar

Dam 305 Day Milk Records

Lact	Milk Kg	Fat Kg	Prot. Kg	Solids Kg	Fat %	Protein %
Avg. of 3	9540	433	334	767	4.54	3.50

NMS: 679 USA Dec. 2023

Milk	TPI: 546	
Milk lb	+1310	
Fat lb	+72kg	+0.09%
Protein lb	+59kg	+0.08%
Daughters	6	

Health

Productive Life	+2.9	Daughter Preg Rate	-0.8
Livability	+0.5	Cow Conception	+0.0
SCC	+3.02	Heifer Conception	+1.9

Type Traits

Stature	-0.4	F & L	0.1
PTA Type	-0.2	Udder	-0.37

- Superb Milk & Components
- Low Stature

# MSX116

## DAUGHTER PROVEN

RD: 34.38%  
SH: 65.63%

# KUNDES GOLDEN BADG FANTASY

International ID  
MSHUSAM000068314754 aAa: 243

GENEX



Pine-Valley Badger Zelda 2E-EX92, Paternal Sister

PEM

## Badger X Frost Kourt

NMS: -179 USA Dec. 2023

Milk	TPI: -46	
Milk lb	-712	
Fat lb	-11kg	+0.09%
Protein lb	-12kg	+0.06%
Daughters	7	

Health

Productive Life	-1.4	Daughter Preg Rate	+0.4
Livability	-2.3	Cow Conception	+0.3
SCC	+3.08	Heifer Conception	+1.2

Type Traits

Stature	1.10	F & L	0.0
PTA Type	0.20	Udder	0.31

- Nice Udders
- High Components

Dairy Shorthorn

Ayrshire

# MSX221

MS (50%)  
HO (25%)  
SH (19%)

 Dovea GENETICS

GENOMIC

## BALLYTRAIN BRAVEHEART (RO)

International ID  
MSHIRLM216090492041 aAa: 243

PEM

 Dovea GENETICS



Dam: Ballytrain Bloom 30 EX95

### Jellybean X Golden Sand

Dam: Ballytrain Bloom 30 EX95 - 305 Day Milk Records

Lact	Milk Kg	Fat Kg	Prot. Kg	Solids Kg	Fat %	Protein %
Avg. of 6	9131	347	329	676	3.80	3.60

EBI Nov 23 Source ICBF			Rel.	EBI Nov 23 Source ICBF			Rel.
EBI	€44		52%	Calving	€1	43%	
Prod. SI	-€3		76%	Calv. Diff. Cow	3.53%	59%	
Milk Kg	-5		76%	Calv. Diff. Hfr	8.22%	49%	
Fat	4kg	+0.07%	76%	Gest. Len (Days)	-0.45	38%	
Protein	-2kg	-0.03%	76%	Health	€0	53%	
Fert. SI	€41		29%	Maint. SI	€26	39%	
Calv. Int	-2.18		30%	Mgmt. SI	€1	42%	
Survival %	1.08		28%	Milk Time (Secs)	-6.85	61%	
Beef	-€39		45%	Temperament	-0.04	27%	



Paternal Dam: Marleycote Princess Jill 31 EX95

- Dairy Shorthorn Grazing Sire
- Wide, Low Stature Dam - EX95 Udder
- Maternal Brother Proven with +366kg Milk, +0.12% Fat & +0.03% Protein

Dairy Shorthorn

Dairy Shorthorn

# BS7563

## DAUGHTER PROVEN

BS: 100%

# SUPERBROWN SHELDON

International ID  
BSWITAM022990224026 aAa: N/A



Superbrown Sheldon Daughter



## Solaris X Juhus

ITE: 748 Rank: 95 Italy Dec. 2023

Milk	
Milk kg	+686
Fat kg	36kg 0.22%
Protein kg	30kg 0.17%
Daughters	116

Fitness			
BCS	100	Milking Speed	88
Longevity	109	Calving Ease	126
SCC	118		

Type Traits: 109			
Stature	109	F & L	117
Strength	123	Udder	107

- Delivers High Component Milk
- Good Udders & Health

# BS7569

## DAUGHTER PROVEN

BS: 100%

# SUPERBROWN HARVEST

International ID  
BSWITAM022990190036 aAa: 465



Superbrown Harvest Daughter



## Huray X Poster

ITE: 814 Rank: 97 Italy Dec. 2023

Milk	
Milk kg	+483
Fat kg	23kg 0.16%
Protein kg	34kg 0.29%
Daughters	172

Fitness			
BCS	86	Milking Speed	106
Longevity	107	Calving Ease	124
SCC	89		

Type Traits: 106			
Stature	105	F & L	124
Strength	89	Udder	108

- Protein % Improver
- Improves Feet & Legs

Brown Swiss

Brown Swiss

GENOMIC

MY: 100%

# DE VINKENHOF RELANO

International ID  
MRYNLDM000613309774 aAa: 531



Dam: De Vinkenhof Daniëlle 189 VG 89

PED



NEW

## Rudo X Mustang

Dam: De Vinkenhof Daniëlle 189 VG 89 - Milk Records

Lact	Milk Kg	Fat Kg	Prot. Kg	Solids Kg	Fat %	Protein %
Avg. of 2	8371	395	326	721	4.72	3.90

EBI Nov 23 Source ICBF	Rel.	EBI Nov 23 Source ICBF	Rel.		
EBI	€131	22%	Calving	€29	20%
Prod. SI	€11	29%	Calv. Diff. Cow	3.25%	29%
Milk Kg	-91	29%	Calv. Diff. Hfr	8.91%	14%
Fat	-2kg	+0.04%	Gest. Len (Days)	-3.72	18%
Protein	1kg	+0.09%	Health	€9	19%
Fert. SI	€52	20%	Maint. SI	€10	13%
Calv. Int	-3.58	23%	Mgmt. SI	-€11	15%
Survival %	0.54	12%	Milk Time (Secs)	0.55	21%
Beef	€21	14%	Temperament	-0.29	11%

- High Protein 'Daniëlle' MRI Maternal Line
- GDam Produced 79,000Kg at 5.23% Fat & 4.04% Protein

# MY7527

DAUGHTER PROVEN

MY: 100%

# BERIO DN

International ID  
MRYDEUM000121676456 aAa: N/A



Berio DN Daughter

PED



## Berus X Dorus

Dam: Jerita VG 88 - 305 Day Milk Records

Lact	Milk Kg	Fat Kg	Prot. Kg	Solids Kg	Fat %	Protein %
Avg. of 9	9009	427	366	793	4.74	4.06

RZG: 113 (Rel: 74%)	Germany Dec. 2023	
Milk		
Milk kg	-259	
Fat kg	+23kg	+0.49%
Protein kg	+8kg	+0.25%
Daughters	35	
Type Traits		
D Type	83	Feet & Legs 109
Body	82	Udder 104
		Muscling 83

- Daughter Proven Components
- VG89 Dam Averaged 9,009 Kg & 4.06% Protein

MRI / Rotbunt

MRI / Rotbunt

# MY7524

## DAUGHTER PROVEN

MY: 100%

# REGUS DN

International ID  
MRYDEUM000121285572 aAa: N/A

PED



Regus DN Daughter

## Remco X Swingfox

Dam: Lachmoewe VG 85 - 305 Day Milk Records

Lact	Milk Kg	Fat Kg	Prot. Kg	Solids Kg	Fat %	Protein %
Lact Avg.	11270	456	403	859	4.05	3.58

RZG: 110 (Rel: 73%) Germany Dec. 2023

Milk			
Milk kg	+145		
Fat kg	+19kg	+0.17%	
Protein kg	+14kg	+0.12%	
Daughters	21		

Type Traits

D Type	98	Feet & Legs	96		
Body	100	Udder	102	Muscling	96

- Dual Purpose with Milk (+145kg)
- Great Production on Dam

# MY7552

## DAUGHTER PROVEN

MY: 100%

# OLPE DN

International ID  
MRYDEUM000120819984 aAa: N/A

PED



Olpe DN Daughter

## Oskur X Matthijs

Dam: Karlsberg VG 85 - 305 Day Milk Records

Lact	Milk Kg	Fat Kg	Prot. Kg	Solids Kg	Fat %	Protein %
Avg. of 5	7712	332	307	639	4.30	3.98

RZG: 107 (Rel: 87%) Germany Dec. 2023

Milk			
Milk kg	-305		
Fat kg	+4kg	+0.25%	
Protein kg	-4kg	+0.11%	
Daughters	168		

Type Traits

D Type	101	Feet & Legs	102		
Body	101	Udder	100	Muscling	99

- Dual Purpose & Moderate Milk
- 3.98% Protein Dam
- Nice Udders & Longer Teats

MRI / Rotbunt

MRI / Rotbunt

HO 46.88%  
JE 34.5%  
FR 18.75%



GENOMIC

# CASTLEROCK SAINT JOHN SRM

International ID  
HOLIRLM213237412174 aAa: 156

SRM



C. Hayden-Millerick, Fethard, Co. Tipperary

Dam of Castlerock Saint John

FR7749 X PKA X SPD

### Dam 305 Day Milk Records

Lact	Milk Kg	Fat Kg	Prot. Kg	Solids Kg	Fat %	Protein %
Avg. of 5	4636	292	207	499	6.23	4.48

NEW



EBI Nov 23	Source	ICBF	Rel.	0	Percentile	50	100
EBI	€323		54%	[Bar chart]			
Production	€113		74%	[Bar chart]			
Fertility	€123		31%	[Bar chart]			
Carbon	€20		53%	[Bar chart]			
Calving	€52		58%	[Bar chart]			
Beef	-€28		44%	[Bar chart]			
Maintenance	€24		44%	[Bar chart]			
Management	€2		50%	[Bar chart]			
Health	€17		62%	[Bar chart]			

### Production

Milk Kg	Fat Kg	Protein Kg	Solids Kg	Fat %	Protein %
-189	20	9	29	0.50	0.28

### Calving

Gestation	Dairy Cow	Dairy Heifer
-4.54	(61% Rel.)	1.97 (64% Rel.)
		4.67 (59% Rel.)

### Fertility

Calving Interval	Survival
-6.75	3.08%

- **+0.50% Fat & +0.28% Protein**
- **Dam Averages 500kg Milk Solids on Once a Day Milking**
- **6.23% Fat & 4.48% Protein**
- **Dam's SCC 53,000 over 6 Lactations**
- **Sexed Semen Available April '24**

Cross Bred

Cross Bred

# FRX131

## GENOMIC

### RENNY OAKWOOD

International ID  
HOLIRLM212584357174 aAa: 234



K & M Twomey, Ballyhooly, Co. Cork

Dam of Renny Oakwood

HO (68.75%)  
FR (18.75%)  
JE (12.5%)

XSR



# JE4764

## DAUGHTER PROVEN

### NEXTGEN HITMAN

International ID  
JERIRLM2226044611566 aAa: 156



Teagasc, Moorepark, Co. Cork

Dam, Nextgen Hillstar Penny

JE: 100%

PED



### FR4582 X FR4154 X ZCD

Dam 305 Day Milk Records

Lact	Milk Kg	Fat Kg	Prot. Kg	Solids Kg	Fat %	Protein %
1 lact.	4727	175	197	372	3.71	4.17

EBI Nov 23 Source ICBF		Rel.	EBI Nov 23 Source ICBF		Rel.
EBI	€290	64%	Calving	€56	89%
Prod. SI	€106	79%	Calv. Diff. Cow	2.15%	90%
Milk Kg	22	79%	Calv. Diff. Hfr	5.73%	75%
Fat	21kg +0.34%	79%	Gest. Len (Days)	-4.74	96%
Protein	11kg +0.18%	79%	Health	€3	67%
Fert. SI	€123	40%	Maint. SI	€4	49%
Calv. Int	-6.73	41%	Mgmt. SI	€8	55%
Survival %	3.11	36%	Milk Time (Secs)	-17.86	81%
Beef	-€10	64%	Temperament	0.06	35%

- XBred with Positive Milk Kg
- +32 Kg of Milk Solids

Daughter 305 Day Milk Records

Parity	Dtrs	Milk Kg	Fat Kg	Prot Kg	Solids Kg	Fat %	Prot %
1	127	4654	229	181	410	4.92	3.89
2	52	5561	268	217	485	4.82	3.9

EBI Nov 23 Source ICBF		Rel.	EBI Nov 23 Source ICBF		Rel.
EBI	€217	83%	Calving	€53	92%
Prod. SI	€110	96%	Calv. Diff. Cow	1.48%	92%
Milk Kg	-208	96%	Calv. Diff. Hfr	2.70%	86%
Fat	15kg +0.43%	96%	Gest. Len (Days)	-4.02	98%
Protein	10kg +0.31%	96%	Health	€5	79%
Fert. SI	€44	66%	Maint. SI	€50	72%
Calv. Int	-1.60	67%	Mgmt. SI	€5	73%
Survival %	1.89	65%	Milk Time (Secs)	0.29	91%
Beef	-€77	82%	Temperament	0.15	58%

- Proven Jersey Sire
- 2nd Lac. Daughters Avg. 5561Kg at 4.82% Fat & 3.9% Prot.

Cross Bred

Jersey

# NEXTGEN BANNIFF

International ID  
 JERIRLM226044633242 aAa: 516

PED



Teagasc, Moorepark, Co. Cork

**Dam of Nextgen Banniff**

**JE8085 X F377**

**Dam 305 Day Milk Records**

Lact	Milk Kg	Fat Kg	Prot. Kg	Solids Kg	Fat %	Protein %
Avg. of 1	4425	235	191	426	5.30	4.31

**GDam 305 Day Milk Records**

Lact	Milk Kg	Fat Kg	Prot. Kg	Solids Kg	Fat %	Protein %
4th Lact.	7864	465	325	790	5.91	4.13
Avg. of 4	5543	324	254	578	5.91	4.37



EBI Nov 23	Source ICBF	Rel.	0	Percentile 50	100
<b>EBI</b>	€260	57%	[Bar chart]		
Production	€110	76%	[Bar chart]		
Fertility	€68	37%	[Bar chart]		
Carbon	€26	56%	[Bar chart]		
Calving	€49	56%	[Bar chart]		
Beef	-€65	43%	[Bar chart]		
Maintenance	€39	45%	[Bar chart]		
Management	€13	61%	[Bar chart]		
Health	€21	66%	[Bar chart]		

**Production**

Milk Kg	Fat Kg	Protein Kg	Solids Kg	Fat %	Protein %
-389	19	6	25	0.64	0.36

**Calving**

Gestation		Dairy Cow		Dairy Heifer	
-4.03	(60% Rel.)	1.99	(59% Rel.)	4.16	(58% Rel.)

**Fertility**

Calving Interval	Survival
-3.30	2.12%

- Lifts Daughter Components by 1% (+0.64% Fat +0.36% Prot.)
- 2 X Generations 10% Solids
- Higher Milk for Pure Jersey -389Kg Milk
- New Zealand Pedigree

Jersey

Jersey



# DoveaGENETICS

Thurles, Co. Tipperary, Ireland, E41FH28

[www.doveagenetics.ie](http://www.doveagenetics.ie)



+353 (0) 504 21755



[info@doveagenetics.ie](mailto:info@doveagenetics.ie)